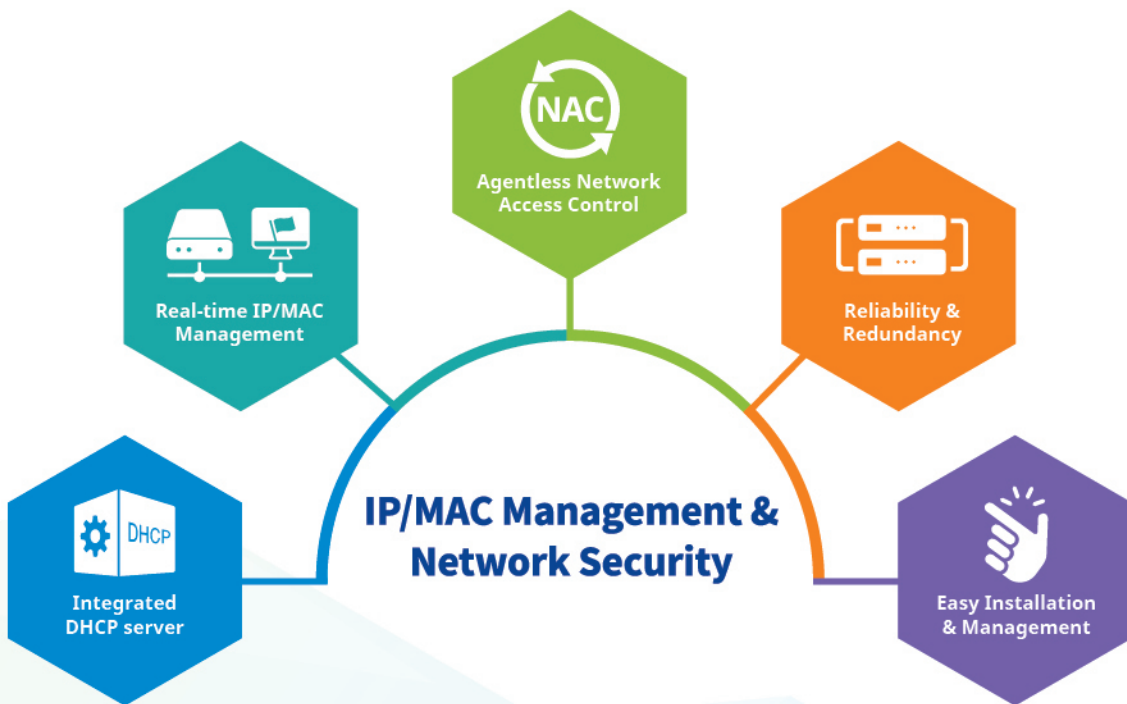


ViASCOPE **SmartIP[®] 2000**



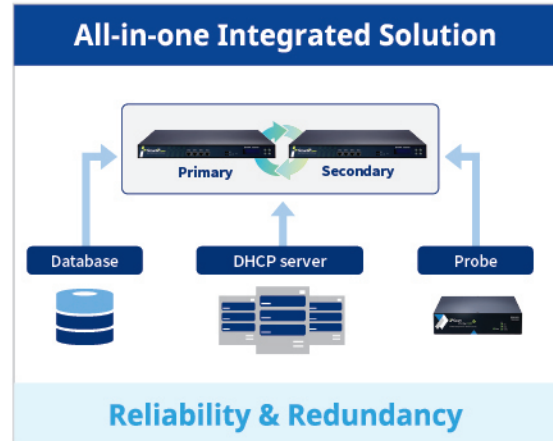
SOLUTION OVERVIEW

VASCOPE **SmartIP 2000**

Multi-function solution that satisfies reliability, scalability and security requirements

SmartIP 2000 is All-in-one solution that integrates Server, DBMS, DHCP server and Probe in a single device.

SmartIP 2000 ensures the network security and it provides a total view of IP resources distributed in the network with the comprehensive and easy to use WEB based user's interface. SmartIP 2000's built-in Probe and DB server enable IT managers to collect, manage and control any IP devices in the network with just a few mouse clicks.



Key Features



IP/MAC Management

- OS and Netbios Name Detection and Blocking
- Automatic collection of IP/MAC status in real-time
- Real-time alerts on important events for IT managers to take prompt actions
- Multiple IP/MAC assignment for devices
- IP protection on mission critical devices to prevent IP conflict and control any unauthorized IP changes
- Provides various IP/MAC based policies such as access time control



Agentless Network Access Control

- AD Authentication
- Real-time IP/MAC authentication
- Real-time blocking and IP conflict monitoring
- Control BYOD's (Bring Your Own Device) network connection
- Control network access by matching NetBIOS name
- Various user authentication methods to control network access
- Block Out-of-range IP addresses
- Block devices violating broadcast threshold policy
- Manage group level network access policy



Integrated DHCP server

- Built-in high-performance DHCP server
- Manage both static and DHCP IP environments
- Manage authorized and unauthorized DHCP IP ranges



Reliability & Redundancy

- Server redundancy
- Database redundancy (data synchronization)
- DHCP server redundancy
- Port redundancy



Easy Installation & Management

- Provide WEB based user's interface
- Safe Mode function for administrators
- Automatic backup and recovery of existing policies
- Create additional data fields and import & export data
- Specific data search and filtering function

IPAM + DHCP server

SmartIP 2000 provides integrated IP/MAC resource management solutions for easy and prompt network management by administrators.

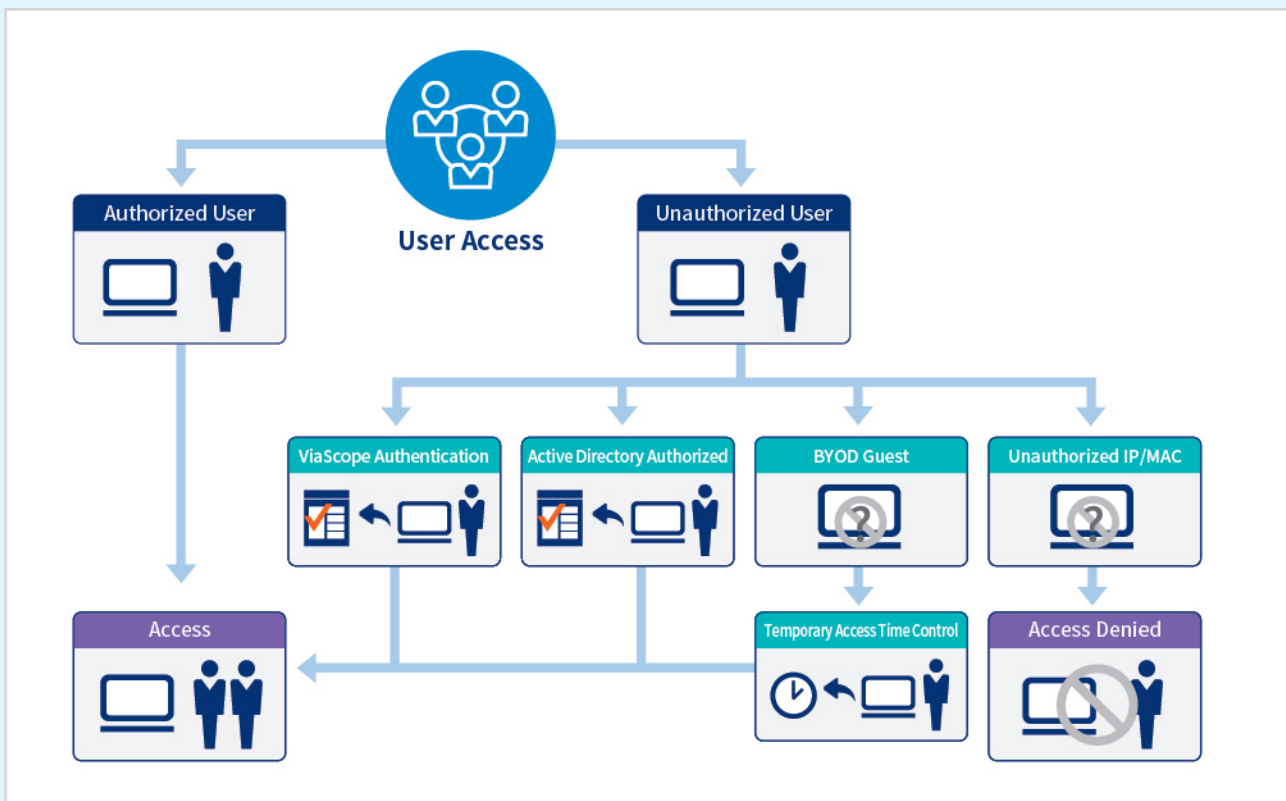
IP Address Management

- OS Detection
- Real-time IP/MAC resource management
- NetBIOS (host name) management
- IP conflict protection policy management
- Control and block unauthorized IP changes
- Real-time alert on important events

DHCP IP Management

- Provide DHCP server function
- Control static IP user under DHCP ranges
- DHCP IP reservation function
- Detect other DHCP servers
- MAC filtering on unauthorized MAC addresses

Network Access Control Process



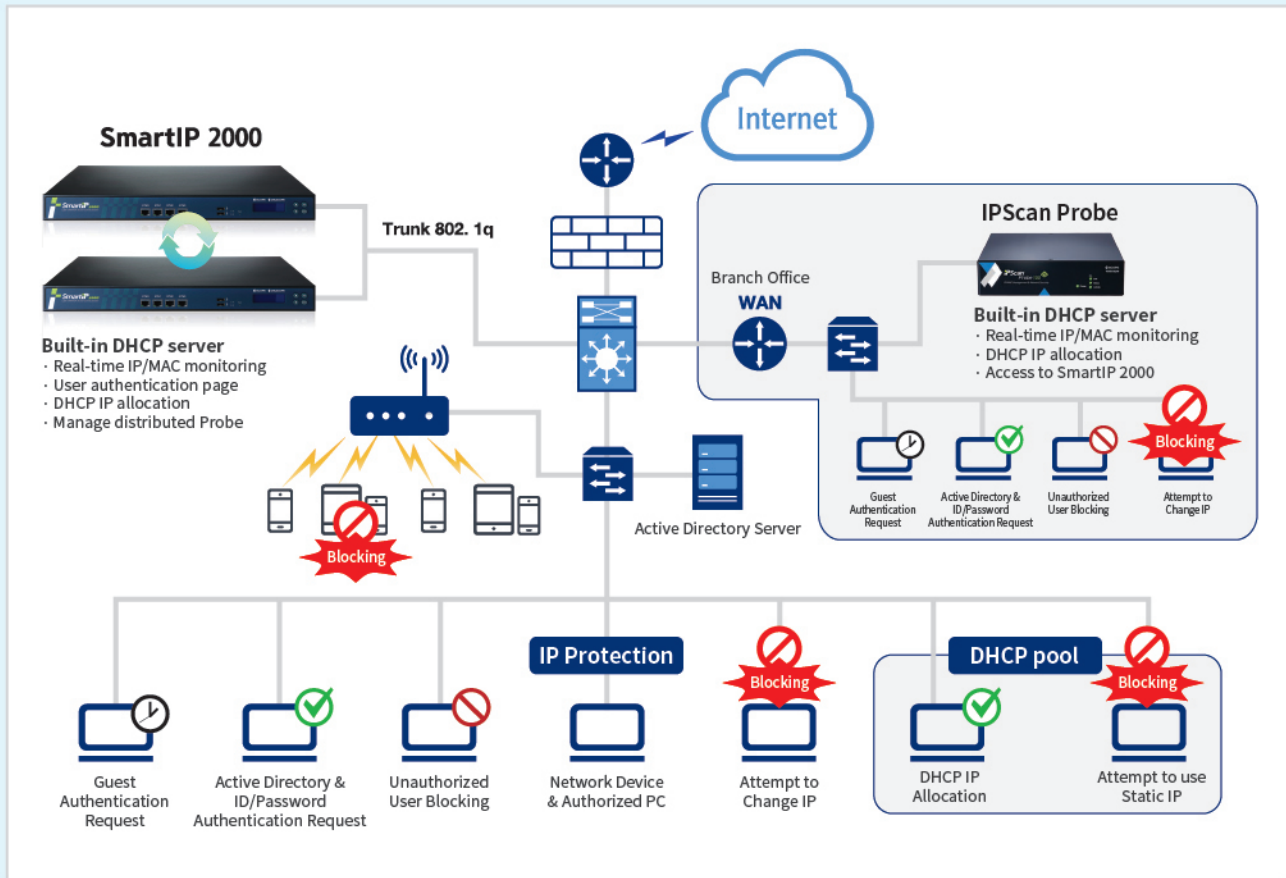
Pre Admission

- Real-time IP/MAC authentication
- Unauthorized user control
- Pre-authentication for new users
- Group policy management
- Temporary access time control

Post Admission

- Manual IP/MAC blocking and control
- IP resource management
- Expired IP address management
- Real-time monitoring and blocking
- Excessive broadcast traffic control

Network Diagram



Specifications

CPU	Intel Core2Duo 2.8Ghz	Input Voltage	AC 100 ~ 240V, 50 ~ 60Hz
OS	Linux	Power	200W
DBMS	MariaDB	Operating Environment	Temperature : 5 ~ 40 °C
DHCP Server	Support		Humidity : 20 ~ 90%
Memory	4GB DDR3 RAM	Size (mm)	438(W) X 292(D) X 44(H)
Interface	10/100/1000Mbps X 4Port	Weight	5.2kg
Trunk Protocol	Support IEEE 802.1q	Redundancy Support	Yes
HDD	500GB	ETC.	Power switch, Reset button, LCD, LED indicator, Dual USB(2.0) port, 19" Rack mountable



ViaScope Inc.

74, Seocho-daero 46-gil, Seocho-gu, Seoul, 06649, Republic of Korea.

Tel. +82-2-3412-9700 Fax. +82-2-3412-9800

www.viascope.com