

iPScan[®] NAC

Network Access Control



OVERVIEW



iPScan NAC provides network surveillance and performs ongoing compliance checks to ensure that all connected devices are automatically identified, classified, authorized, and given policy-based access control. It also provides all the major features that network managers expect, such as NAC-driven IP Address Management (IPAM), Desktop Configuration Management, complete security control over Wi-Fi access, automated IT security operation, IT asset management, and much more.

Network Access Control

- User Authentication
- IPAM, DHCP Server
- Switch Port Control
- Control NIC and AP

Correlated Information

- Network Node
- IP/MAC Address
- OS detection
- Wireless Access

Asset Management

- Control the use of illegal S/W
- Comply with security policy
- Security patches

Features

Site-defined
Network Access
Control

Centralized
Management for
All Network
End-point

Security &
Compliance

Various Analyses
& Report Support

S/W Integrity

- Administrator-defined integrity status inspection
- Administrator-defined latest update status inspection

OS Patch/Service Pack

- Security patch auto-apply
- Latest version of OS patch/service pack apply

Block S/W

- Block target S/W installed or running check
- A specific version or all version of the same S/W check support

Others

- Remote access block
- IP Change Block
- Screen saver enable and other security policy

Visibility. Control. Response.
Secure your network without changing it



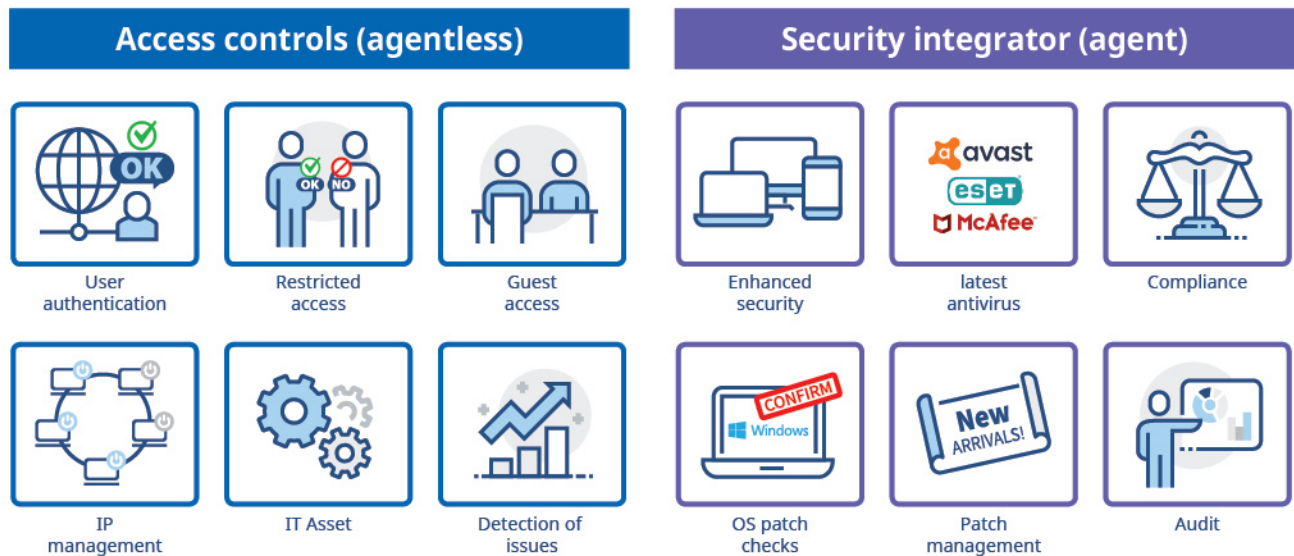
THE CONCEPT



NAC : Network Access Control

A network access control (NAC) process adds policies to the network for controlling access by devices and users. Policies may be based on device and/or user authentication and the status of endpoint configuration.

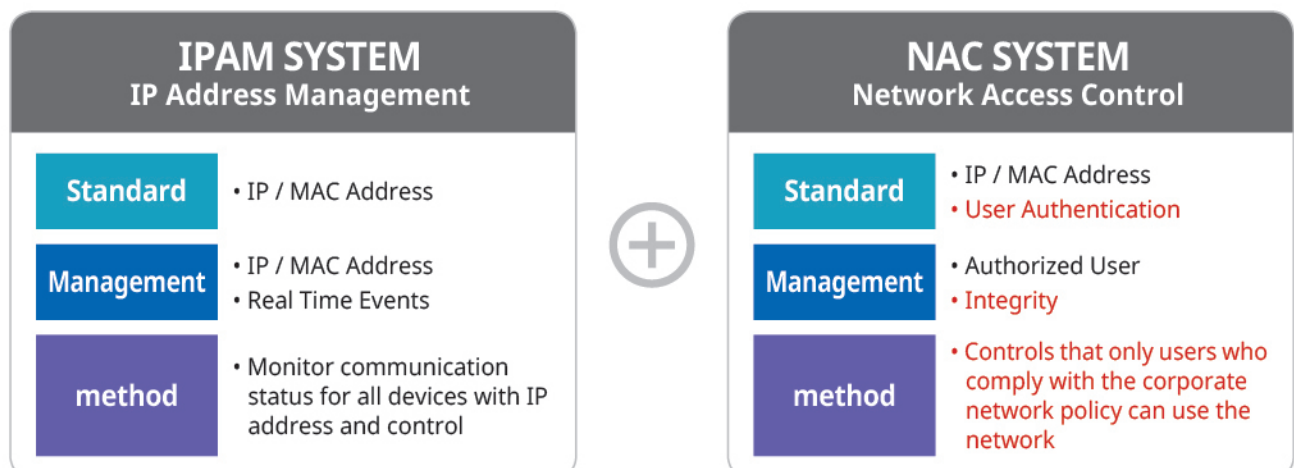
Source: <http://www.gartner.com/it-glossary/network-access-control-na/>



IPAM vs. NAC

Minimize security threats from all devices connected to the network

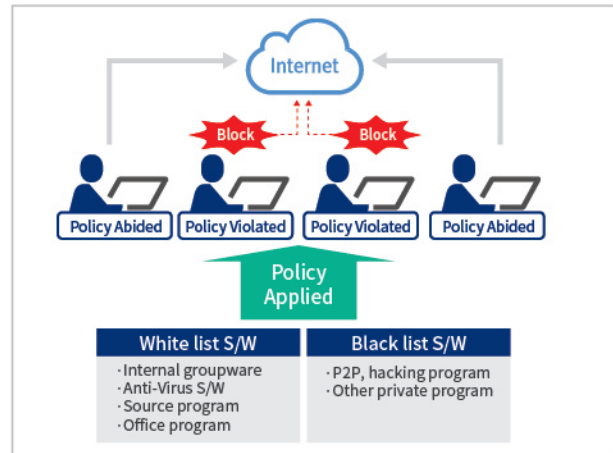
Main Purpose	Network asset management	Main Purpose	Checking reliability of network users Policy compliance real-time management
---------------------	--------------------------	---------------------	---



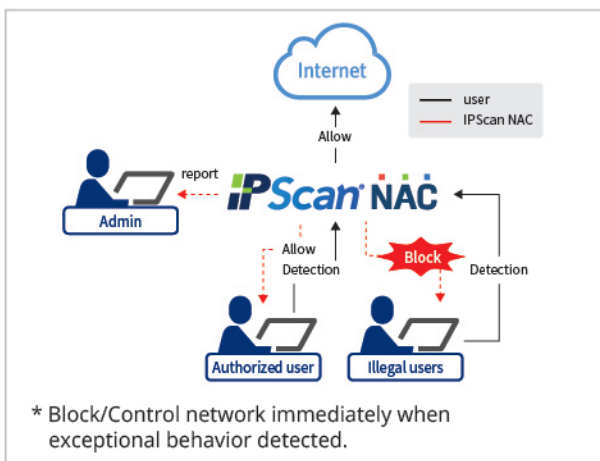
MAJOR FUNCTIONS

Required/Malignant S/W Management

- According to administrator's setting, IPScan NAC can check the installed and running status of Mandatory / Malware software.
- If the software installed/running status is detected by Mandatory / Malware S/W Policy, the network of PC will be blocked.



Detouring Communication and Security Setting Inspection



- IPScan can detect and block the end-point device who violated internal network policy and attempted to use detouring communication.
- IF detouring communication attempt is detected, the user's network will be blocked.

Real-time Network Usage Status

Real-time Status

- Real-time IP usage graph GUI
- General IP conflict event monitoring

Warning/Block Status

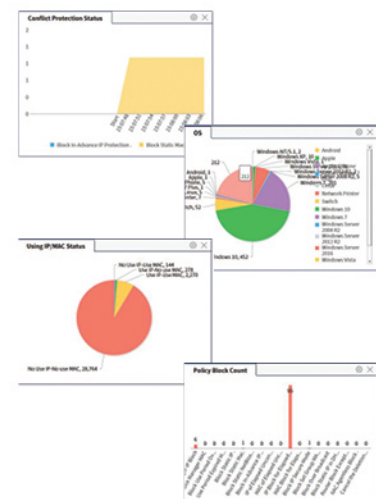
- Warning Status: shows the status of hosts violated warning policy.
- Block Status: shows the status of hosts violated block policy.

Setting/Exception Status

- Setting Status: shows the status of hosts applied specified policy on.
- Exception Status: shows the status of hosts under Network Block Exception policy.

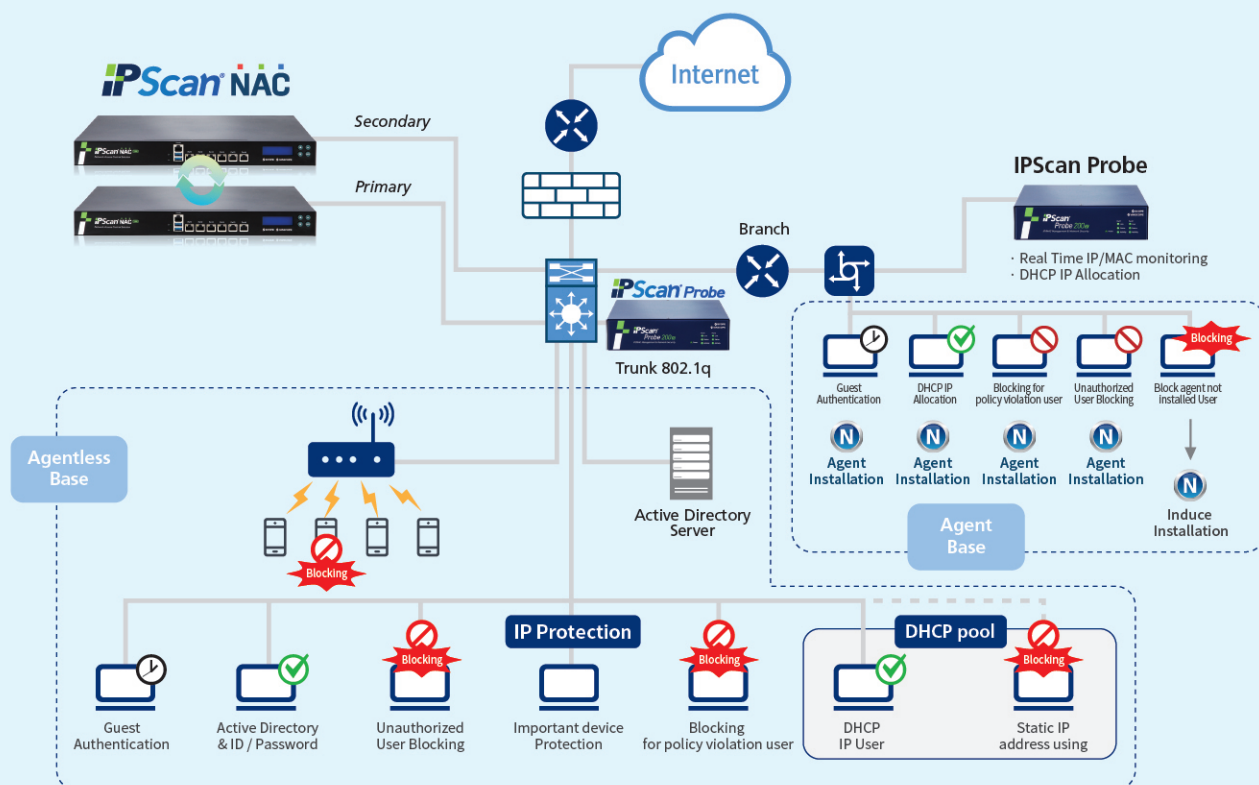
General/Assets Status

- General Status: shows the status of authorized/unauthorized hosts, host type and unused hosts.
- Asset Status: shows the status of IP asset and host OS in each IP range.






NETWORK CONFIGURATIONS

Easy to control network access by mixed agent and agentless method



IPScan NAC Specifications

	IPScan NAC 1000	IPScan NAC 2000	IPScan NAC 10000
image			
CPU	Intel I5-4460 3.2GHz(Quad Core)	Intel E3-1225V3 3.2GHz(Quad Core)	Intel E5-2640V3 2.6GHz(Octa Core) *2
MEMORY	16GB	32GB	64GB
CF MEMORY / MicroSD	-	-	4GB CF MEMORY
Recommended Active IP	1,000	2,000	10,000
Interface	Ethernet 10/100/1000Mbps (RJ-45) X 6 ports	Ethernet 10/100/1000Mbps (RJ-45) X 8 ports 2 x SFP Module Slots	Ethernet 10/100/1000Mbps (RJ-45) X 10 Ports 4 x SFP Module Slots 4 x SFP+ Module Slots
Console	1 x RJ45 (to RS-232) Console Port 2 x USB 3.0	1 x RJ45 (to RS-232) Console Port 2 x USB 3.0	1 x RJ45 (to RS-232) Console Port 2 x USB 3.0
Size (mm)	430 (W) x 44 (H) x 330 (D)	430 (W) x 88 (H) x 330 (D)	444 (W) x 88 (H) x 574 (D)
Weight	5.0Kg	10.0Kg	20.0Kg
Power	250W	460W (Redundant)	550W (Redundant)
Input Voltage	AC 100 ~ 240V, 50 ~ 60Hz	AC 100 ~ 240V, 50 ~ 60Hz	AC 100 ~ 240V, 50 ~ 60Hz

* Above H/W specifications are subject to change without notice.

iPScan[®] NAC



ViaScope Inc.

74, Seocho-daero 46-gil, Seocho-gu, Seoul, 06649, Republic of Korea.

Tel. +82-2-3412-9700 Fax. +82-2-3412-9800

www.viascope.com